

**In vitro Antileukemic Activity of Extracts of Some Medicinal Plants from Upper Egypt in Human Chronic Leukemia K562 Cell Line**Shimaa M. Abdelgawad^{1*}, Mona H. Hetta¹, Ghada A. Fawzy², Hesham I. El-Askary²¹Department of Pharmacognosy, Faculty of Pharmacy, Fayoum University, 63514, Egypt²Department of Pharmacognosy, Faculty of Pharmacy, Cairo University, 11562, Egypt

ARTICLE INFO

Article history:

Received 29 October 2021

Revised 08 December 2021

Accepted 29 December 2021

Published online 03 January 2022

Copyright: © 2021 Abdelgawad *et al.* This is an open-access article distributed under the terms of the [Creative Commons Attribution License](https://creativecommons.org/licenses/by/4.0/), which permits unrestricted use, distribution, and reproduction in any medium, provided the original author and source are credited.

ABSTRACT

Leukemia is the fourth most common cancer in Egypt, with higher incidence rates in Upper Egypt. Because there are several side effects associated with the use of drugs to treat leukemia, it is crucial to find more effective, safe, and cost-effective alternative treatment options. The present study was conducted to investigate the antileukemic potentials of some medicinal plants which are cultivated and used ethnomedicinally in Upper Egypt, where chronic myeloid leukemia (CML) is prevalent. Fifty-six different medicinal plants were extracted with 75% ethanol, and their hydro-ethanol extracts were tested against the human chronic leukemia K562 cell line at a concentration of 10 mg/mL using the trypan blue exclusion assay. The percentage of inhibition was determined for each extract. The results showed that *Sesbania sesban* L. Merr leaves, *Curcuma aromatica* Salisb. roots, *Spinacia oleracea* L. leaves, *Quercus infectoria* gall, and *Thymus vulgaris* L. leaves were the most active plant extracts against the leukemia K562 cell line, with percentage inhibition values of 100, 90.2, 88.9, 87, and 85.2%, respectively, compared to Taxol which had a value of 90.7%. The findings of this study revealed that the flora of Upper Egypt is a valuable source of plants, rich in antileukemic phytochemicals.

Keywords: Antileukemic, Chronic myeloid leukemia, Medicinal plants, Screening, Upper Egypt.

Introduction

Leukemia is ranked as the fourth most prevalent cancer in Egypt, accounting for about 7.2% of all the reported cancer cases, at all ages, and in both genders.¹ According to the National Population-Based Cancer Registry Program, the incidence rates of myeloid leukemia in Upper Egypt, "areas from Aswan, downriver to the area of El-Ayait",² were higher than in Lower Egypt (3.36-3.7% and 0.63-0.65%, respectively).³ Increasing age, diabetes mellitus, hepatitis C virus, obesity, exposure to agricultural chemicals, and exposure to electromagnetic fields were all linked to an increase in the incidence of hematological malignancies in Upper Egypt.⁴ Chronic myeloid leukemia (CML) is a myeloproliferative cancer marked by uncontrolled myeloid cell divisions in the bone marrow.⁵ The Philadelphia (Ph) chromosome (Bcr-Abl gene) is a chromosomal irregularity that results from a reciprocal translocation between the Abl gene on chromosome 9 and the Bcr gene on chromosome 22 in pluripotent hematopoietic stem cells.^{6,7} The Bcr-Abl oncogene encodes a constitutively active tyrosine kinase enzyme that activates multiple proliferative signaling pathways within cells.⁸ Around 57% of Egyptian CML patients were Ph-positive.⁹ Several treatment strategies are currently being used in Egypt to treat CML patients. These strategies include using hydroxyurea in 50.6% of patients, Gleevec (imatinib, a tyrosine kinase inhibitor) in 37.2% of patients, and interferon-alpha in 12.2% of patients.⁹ According to the reports of complete hematologic responses (CHR) of CML Egyptian patients to the current medication, the percentage of complete hematologic and

cytogenetic responses were 67.2-71.6, 31.9-34.1, and 6-18.7%, respectively, of patients who received Gleevec, hydroxyurea, and a combination of Gleevec and hydroxyurea. According to reports, 21.7% of patients had disease progression.⁹ Although, hematopoietic stem cell transplantation (HSCT) is considered an effective therapy, it is not always appropriate due to a lack of suitable donors.

The increased disease progression and response failure in those treated with Gleevec were attributed to treatment interruption due to the high cost of Gleevec therapy, as well as the development of adverse effects.⁹ Interrupted treatment results in the loss of acquired therapeutic responses and, in some cases, disease progression.⁹⁻¹¹ Furthermore, resistance to imatinib treatment has been reported in several studies due to a variety of molecular mechanisms, including amplification and overexpression of the Bcr/Abl gene,¹² or overexpression of the MDR1 gene.¹³ Recent studies revealed that imatinib resistance in Egyptian CML patients was caused by an association of MDR1 gene polymorphism (G2677T),¹⁴ T315I mutation, which was reported in 24.4% of CML patients in Egypt.¹⁵ Furthermore, low miR-30a expression and high Beclin-1 expression have been linked to resistance to imatinib therapy in Egyptian CML patients.¹⁶ Given the prevalence of diseases among Egyptians, the scarcity of suitable donors for HSCT, the high cost of currently used tyrosine kinase inhibitors (TKIs), the low efficacy of other medications such as hydroxyurea and interferon-alpha, and TKI resistance, it has become vital to search for more effective, safe, and cost-efficient treatments. For several medicinal plants and their isolated secondary metabolites against a CML cell line (K562), the value of natural products in the arsenal of CML therapies has been widely described.¹⁷ Several natural compounds are currently being tested in clinical trials for the treatment of CML, such as Homoharringtonine, in Phase II trials, 17-AAG (analog of glendamyacin-polyketide) in Phase I clinical trials, and Paclitaxel in Phase I/II trials.¹⁷ According to the Information and Decision Support Center in Egypt,¹⁸ 23% of Egyptians use medicinal plants to treat their ailments. There are several methods for selecting plants as drug discovery candidates, including random selection followed by chemical or biological screening, ethnomedical use of plants, and

*Corresponding author. E mail: smm13@fayoum.edu.eg
Tel: +201092675086

Citation: Abdelgawad SM, Hetta MH, Fawzy GA, El-Askary HI. *In vitro* Antileukemic Activity of Extracts of Some Medicinal Plants from Upper Egypt in Human Chronic Leukemia K562 Cell Line. Trop J Nat Prod Res. 2021; 5(12):2115-2122. doi.org/10.26538/tjnpr/v5i12.12

Official Journal of Natural Product Research Group, Faculty of Pharmacy, University of Benin, Benin City, Nigeria.

biologic activity reports.^{19,20} The aim of the current research was to investigate the antileukemic activity of medicinal plants cultivated, or utilized by Egyptians in Upper Egypt, where CML is the most common type of leukemia.

Materials and Methods

Sources of plant material

The fifty-six plants used in this study (Tables 1-4) were collected from Beni-Suef and Fayoum governorates during the period from September to December 2017, and some were obtained from herbal

vendors and shops. The collected plants belong to thirty-one plant families, including the Asteraceae, Chenopodiaceae, Fabaceae, Lamiaceae, and Poaceae as the major families. The plants were authenticated by Prof. Dr. Lotfy Boulus, Prof. Dr. Mohammed El Gibali, (Faculty of Science, Cairo University), Dr. Mahmoud Omar (Plant Taxonomy Department, Faculty of Science, Beni-Suef University), and Mrs. Therese Labib, (Botanical Specialist and Consultant at Orman and Qubba Botanical Gardens, Giza, Egypt). The voucher specimens (FUPD-1 to FUPD-56) were kept at the Herbarium of the Department of Pharmacognosy, Faculty of Pharmacy, Fayoum University, Egypt.

Table 1: Selected medicinal plants from Upper Egypt for biological screening against leukemia K562 cell line

No.	Latin name	Common name	Voucher number	Family	Organ used	EtOH extract (g)
1	<i>Alhagi graecorum</i> Boiss ¹	Camel Thorn, Manna tree	FUPD-1	Papilionaceae	Leaves	18.5
2	<i>Amaranthus lividus</i> L. ¹	Pigweed	FUPD-2	Amaranthaceae	Herb	29.7
3	<i>Anastatica hierochuntica</i> L. ³	Dinosaur plant, Mary's flower, Palestinian tumble weed.	FUPD-3	Brassicaceae	Herb	13.5
4	<i>Artemisia Absinthium</i> L. ³	Absinthe wormwood, green ginger	FUPD-4	Asteraceae	Leaves, Flowers	19.8
5	<i>Aster squamatus</i> Sprengel ¹	Aster, Starwort.	FUPD-5	Asteraceae	Herb	12.2
6	<i>Beta vulgaris var. cicla</i> L. ^{2*}	Spinach beet	FUPD-6	Chenopodiaceae	Leaves	18.7
7	<i>Camellia sinensis</i> L. Kuntze ^{3*}	Green tea plant	FUPD-7	Theaceae	Leaves	30.5
8	<i>Cartagena ipecacuanha</i> Brot. ³	Cartagena Ipecacuanha, Rio ipecac	FUPD-8	Rubiaceae	Root	109.3
9	<i>Chenopodium murale</i> L. ¹	Nettle leaf, Goose foot	FUPD-9	Chenopodiaceae	Herb	22.8
10	<i>Cichorium endivia</i> L. ^{2*}	Cultivated Endive.	FUPD-10	Asteraceae	Leaves	23.5
11	<i>Cichorium intybus</i> L. ³	Chicory.	FUPD-11	Asteraceae	Roots, Leaves	36.8
12	<i>Cinnamomum cassia</i> (Nees and T.Nees) Farw. ^{3*}	Chinese Cassia, Chinese Cinnamon.	FUPD-12	Lauraceae	Bark	11.4
13	<i>Citrus reticulata</i> Blanco ²	Mandarin orange, West African Cherry Orange	FUPD-13	Rutaceae	Leaves	32.7
14	<i>Conyza dioscoridis</i> L. Desf. ¹	Horseweed, Butterweed, Fleabane	FUPD-14	Asteraceae	Herb	14.1
15	<i>Corchorus olitorius</i> L. ^{2*}	Jew's Mallow	FUPD-15	Tiliaceae	Leaves	17.8
16	<i>Curcuma aromatica</i> Salisb. ^{3*}	Curcuma	FUPD-16	Zingiberaceae	Rhizome	11.1

¹Wild plants, ²cultivated plants, ³plants bought from herbal markets. *Edible vegetables and herbal teas consumed in Upper Egypt district.

Table 2: Selected medicinal plants from Upper Egypt for biological screening against leukemia K562 cell line

No.	Latin name	Common name	Voucher number	Family	Organ used	EtOH extract (g)
17	<i>Cymbopogon Proximus</i> Spreng. ³	Halfa bar	FUPD-17	Poaceae	Leaves	8.6
18	<i>Cyperus alopecuroides</i> Rottbn. ¹	Foxtail flat sedge	FUPD-18	Cyperaceae	Leaves, Flowers	20
19	<i>Cyperus Rotundus</i> L. ¹	Nut grass, Tiririca	FUPD-19	Cyperaceae	Leaves, Flowers	19.1
20	<i>Daucus carota</i> L. ²	Wild carrot, Queen Anne's lace	FUPD-20	Apiaceae	Leaves	23.7
21	<i>Desmostachia bipinnata</i> L. Stapf ¹	Halfa grass, Big cord grass, Salt reed-grass	FUPD-21	Poaceae	Herb	8.8
22	<i>Emblica officinalis</i> L. Kurz ³	Amla, Indian Gooseberry	FUPD-22	Phyllanthaceae	Herb	43.4
23	<i>Eruca sativa</i> Mill. ^{2*}	Salad Rocket, Rucoli, Rugula	FUPD-23	Brassicaceae	Leaves	25.9
24	<i>Ficus carica</i> L. ²	Common fig	FUPD-24	Moraceae	Leaves	12.2
25	<i>Glycyrrhiza glabra</i> L. ^{3*}	Liquorice	FUPD-25	Fabaceae	Roots, Rhizomes	14.1

26	<i>Hibiscus sabdariffa</i> L. ^{3*}	Roselle, Karkadeh	FUPD-26	Malvaceae	Flowers calyx and epicalyx	45.4
27	<i>Hyphaene thebaica</i> L. Mart. ^{3*}	Doum palm, Gingerbread tree	FUPD-27	Arecaceae	Fruits	46.4
28	<i>Lawsonia inermis</i> L. ³	Loose strife, Egyptian privet, Henna	FUPD-28	Lythraceae	Leaves	19.6
29	<i>Lupinus albus</i> L. ^{3*}	Lupine	FUPD-29	Fabaceae	Seeds	14.6
30	<i>Malva parviflora</i> L. ^{2*}	Cheese weed, Egyptian mallow, Marshmallow	FUPD-30	Malvaceae	Leaves	15
31	<i>Mentha longifolia</i> L. Huds. ^{1*}	Horsemint	FUPD-31	Lamiaceae	Herb	17.7

¹Wild plants, ²cultivated plants, ³plants bought from herbal markets. *Edible vegetables and herbal teas consumed in Upper Egypt district.

Table 3: Selected medicinal plants from Upper Egypt for biological screening against leukemia K562 cell line

No.	Latin name	Common name	Voucher number	Family	Organ used	EtOH extract (g)
32	<i>Morus alba</i> L. ²	White mulberry	FUPD-32	Moraceae	Leaves	15.6
33	<i>Opuntia ficus indica</i> L. Mill. ²	Prickly pear	FUPD-33	Cactaceae	Leaves	16.3
34	<i>Origanum majorana</i> L. ^{3*}	Sweet marjoram	FUPD-34	Lamiaceae	Herb	22.7
35	<i>Peganum harmal</i> L. ³	Harmal, Syrian rue	FUPD-35	Nitrariaceae	Seeds	12.2
36	<i>Phaseolus vulgaris</i> L. ²	French bean	FUPD-36	Papilionaceae	Leaves	18.1
37	<i>Phragmites communis</i> (Cav.) Trin. ex Steud. ¹	Common reed	FUPD-37	Poaceae	Leaves, Flowers	8.1
38	<i>Pimpinella anisum</i> L. ^{3*}	Aniseed, Anise	FUPD-38	Apiaceae	Fruits	14.9
39	<i>Psidium guajava</i> L. ²	Guava	FUPD-39	Myrtaceae	Leaves	10.1
40	<i>Punica granatum</i> L. ²	Pomegranate	FUPD-40	Lythraceae	Fruit pericarp	31.9
41	<i>Quercus infectoria</i> gall ³	Aleppo oak	FUPD-41	Fagaceae	Galls	85.6
42	<i>Ricinus communis</i> L. ¹	Castor	FUPD-42	Euphorbiaceae	Leaves	24.5
43	<i>Salix subserrata</i> Willd. ¹	Salix	FUPD-43	Salicaceae	Leaves	22.4
44	<i>Sesamum indicum</i> L. ²	Sesame	FUPD-44	Pedaliaceae	Leaves	17.2
45	<i>Sesbania sesban</i> L. Merr. ¹	River hemp, Sesban	FUPD-45	Fabaceae	Leaves	76.5
46	<i>Sisymbrium irio</i> L. ¹	London rocket	FUPD-46	Brassicaceae	Herb	24.3
47	<i>Solenostemma aargel</i> (Delile) Hayne ³	Argel	FUPD-47	Apocyanaceae	Leaves	31.4
48	<i>Spinacia oleracea</i> L. ^{2*}	Spinach	FUPD-48	Chenopodiaceae	Leaves	14.2
49	<i>Tamarindus indica</i> L. ^{3*}	Tamarind	FUPD-49	Fabaceae	Fruit, Seeds	60.6
50	<i>Tamarix nilotica</i> L. ¹	Nile tamarisk	FUPD-50	Tamaricaceae	Herb	17.2
51	<i>Thymus vulgaris</i> L. ^{2*}	Thyme	FUPD-51	Lamiaceae	Herb	14.9
52	<i>Tilia cordata</i> Mill. ^{3*}	Small leaved Lime	FUPD-52	Tiliaceae	Leaves, Flowers	11.8
53	<i>Trifolium alexandrinum</i> L. ²	Egyptian Clover	FUPD-53	Fabaceae	Leaves	25.4

¹Wild plants, ²cultivated plants, ³plants bought from herbal markets. *Edible vegetables and herbal teas consumed in Upper Egypt district.

Table 4: Selected medicinal plants from Upper Egypt for biological screening against leukemia K562 cell line

No.	Latin name	Common name	Voucher number	Family	Organ used	EtOH extract (g)
54	<i>Withania somnifera</i> L. Dunal. ¹	Ashwagandha, Indian Ginseng	FUPD-54	Solanaceae	Leaves	17.5
55	<i>Zingiber officinale</i> Roscoe ^{3*}	Ginger	FUPD-55	Zingiberaceae	Rhizome	12.9
56	<i>Ziziphusspina-christi</i> L. Desf. ²	Christ's Thorn Jujube	FUPD-56	Rhamnaceae	Leaves	18.9
41	<i>Quercus infectoria</i> gall ³	Aleppo oak	FUPD-41	Fagaceae	Galls	85.6
42	<i>Ricinus communis</i> L. ¹	Castor	FUPD-42	Euphorbiaceae	Leaves	24.5
43	<i>Salix subserrata</i> Willd. ¹	Salix	FUPD-43	Salicaceae	Leaves	22.4

44	<i>Sesamum indicum</i> L. ²	Sesame	FUPD-44	Pedaliaceae	Leaves	17.2
45	<i>Sesbania sesban</i> L. Merr. ¹	River hemp, Sesban	FUPD-45	Fabaceae	Leaves	76.5
46	<i>Sisymbrium irio</i> L. ¹	London rocket	FUPD-46	Brassicaceae	Herb	24.3
47	<i>Solenostemma aargel</i> (Delile) Hayne ³	Argel	FUPD-47	Apocyanaceae	Leaves	31.4
48	<i>Spinacia oleracea</i> L. ^{2*}	Spinach	FUPD-48	Chenopodiaceae	Leaves	14.2
49	<i>Tamarindus indica</i> L. ^{3*}	Tamarind	FUPD-49	Fabaceae	Fruit, Seeds	60.6
50	<i>Tamarix nilotica</i> L. ¹	Nile tamarisk	FUPD-50	Tamaricaceae	Herb	17.2
54	<i>Withania somnifera</i> L. Dunal. ¹	Ashwagandha Indian Ginseng	FUPD-54	Solanaceae	Leaves	17.5
55	<i>Zingiber officinale</i> Roscoe ^{3*}	Ginger	FUPD-55	Zingiberaceae	Rhizome	12.9
56	<i>Ziziphus spina-christi</i> L. Desf. ²	Christ's Thorn Jujube	FUPD-56	Rhamnaceae	Leaves	18.9

¹Wild plants, ²cultivated plants, ³plants bought from herbal markets. *Edible vegetables and herbal teas consumed in Upper Egypt district.

Preparation of plant extracts

The air-dried powder of each plant material (100 g) was extracted with 75% ethanol (500 mL×3). Each extract was filtered off and concentrated using a rotary evaporator (BUCH, rotavapor® R-300). Each residue was weighed and stored in a refrigerator at -4°C until used.

Trypan blue exclusion cytotoxicity assay using leukemia K562 cells

Human chronic leukemia K562 cells were purchased from the American Type Culture Collection, Rockville MD, USA. The cell line was grown in suspension culture at 37°C in RPMI-1640 medium supplemented with 10% non-dialyzed fetal bovine serum (FBS), 2 mM L-glutamine, 100 units/mL of penicillin, 10 µg/mL of streptomycin, 2.5 µg/mL fungizone, 10% heat-activated fetal calf serum, and 2 mM glutamine. Cells were allowed to grow at 37°C in a humidified atmosphere of 5% CO₂ and 95% air to form a monolayer. At 60-70% confluence, cells were sub-cultured; first they were washed with phosphate-buffered saline (PBS), then trypsinized with 3 mL of 0.25% trypsin in 0.03% EDTA, then washed with fresh medium and seeded at 1 × 10⁴ cells/well in a 96-well microplate. K562 cells were set up at 1 × 10⁵ cells/well in Costar 24-well plates. The cells were allowed to grow undisturbed for 24 h before the addition of extracts. After 48 h incubation with extracts at 37°C, viable cell counts were made by using the trypan blue exclusion method to assess cell viability. Taxol was used as a standard.²¹⁻²³ The extracts were tested at a concentration of 10 mg/mL and the percentage inhibitions were calculated.

Results and Discussion

The 75% ethanol extracts of fifty-six medicinal plants were screened for their antileukemic activity against the leukemia K562 cell line at a concentration of 10 mg/mL and the percentage of inhibition was calculated (Table 5, Figures 1 and 2). Fourteen plant extracts demonstrated more than 50% inhibition of the leukemia K562 cells. The percentages of inhibition include extracts from *Sesbania sesban* L. Merr leaves (100%), *Curcuma aromatica* Salisb. roots (90.2%), *Spinacia oleracea* L. leaves (88.9%), *Quercus infectoria* gall (87%), *Thymus vulgaris* L. leaves (85.2%), *Trifolium alexandrinum* L. leaves (78.2%), *Aster squamatus* Sprengel aerial parts (74%), *Withania somnifera* L. Dunal. Leaves (67.5%), *Ziziphusspina-christi* L. Desf. leaves (66.6%), *Embllica officinalis* L. Kurz aerial parts (65.9%), *Camellia sinensis* L. Kuntze leaves (56.5%), *Psidium guajava* L. leaves (54.2%), *Sisymbrium irio* L. aerial parts (52.5%), and *Morus alba* L. leaves (52.2%), compared to Taxol (90.7%) as shown in Table 5 and Figure 2.

Sesbania sesban, *Curcuma aromatica*, *Spinacia oleracea*, *Quercus infectoria* gall, and *Thymus vulgaris* were chosen as the top five active plants. There are no current reports about the cytotoxicity of *Sesbania sesban* against the K562 cell line. Phytochemical screening of the leaves of this plant showed the presence of steroids such as β -

sitosterol and campesterol,²⁴ triterpenoids such as betulinic and oleanolic acids,^{25,26} saponins of oleanolic acid,²⁷⁻³⁰ flavonoids,^{31,32} and coumarins.³³ However, the cytotoxic activity of *Curcuma aromatica* against K562 cells was previously described, and the activity of *Curcuma* extract was attributed to the twenty-five isolated curcuminoids, and the cytotoxicity of these compounds was evaluated against K562 cells as well.³⁴

Although, the antileukemic activity of the whole extract of *Spinacia oleracea* leaves against the K562 cell line has been previously reported,^{35,36} none of these studies described the detailed phytochemistry of the plant or its antileukemic metabolites. From the *Spinacia oleracea* L. leaves, several phytoconstituents such as flavonoids,³⁷⁻⁴¹ steroids,^{42,43} triterpenoid saponin,⁴⁴ phenolic acids,^{45,46} carotenoids,⁴⁷ and glycolipids,⁴⁸ have been isolated. It also contains the major vitamins, such as vitamins C, A, and E, as well as minerals such as iron, calcium, potassium, manganese, and zinc.⁴⁹ The ethanol extract of *Quercus infectoria* galls (*Andricus sternlichtii* and *Andricus moreae*) showed cytotoxic effects with IC₅₀ values of 21.52 and 39.14 µg/mL, respectively, on the K562 cell line.⁵⁰ The gall is known to be rich in gallic acid, which is reported as an antileukemic compound that inhibits the proliferation of K562 cells through inhibition of BCR/ABL kinase and NF- κ B inactivation.⁵¹ The antileukemic activity of the total extract of *Thymus vulgaris* leaves or its volatile oil against the K562 cell line was previously described.^{52,53} The cytotoxic activity of Thymol, the major constituent of this plant, was also estimated against the K562 cells. Thymol exhibited antiproliferative activity (IC₅₀ = 400-500 µM) by significantly reducing the level of DNA damage induced in K562 cells by the strong oxidant, H₂O₂.⁵⁴

Conclusion

The study showed that *Sesbania sesban* leaves, *Curcuma aromatica* roots, *Spinacia oleracea* leaves, *Quercus infectoria* gall, and *Thymus vulgaris* leaves were the top five active plants against leukemia K562 cells. The findings of the study reveal that the flora of Upper Egypt can be a source of structurally diverse metabolites that could lead to the development of numerous drugs to treat CML.

Conflict of Interest

The authors declare no conflict of interest.

Authors' Declaration

The authors hereby declare that the work presented in this article is original and that any liability for claims relating to the content of this article will be borne by them.

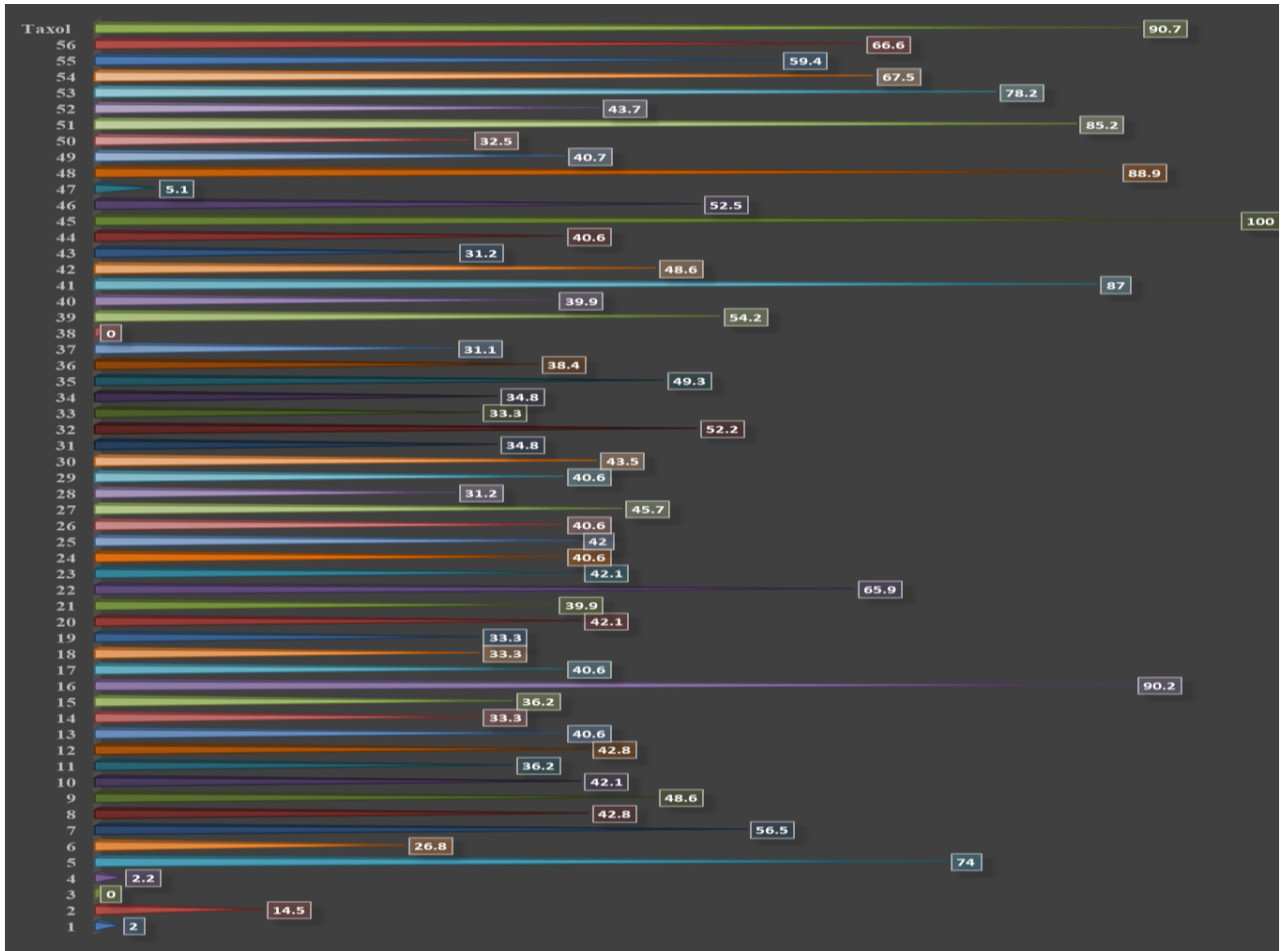


Figure 1: Percentage inhibition of fifty-six plant extracts from Upper Egypt against K562 cell line

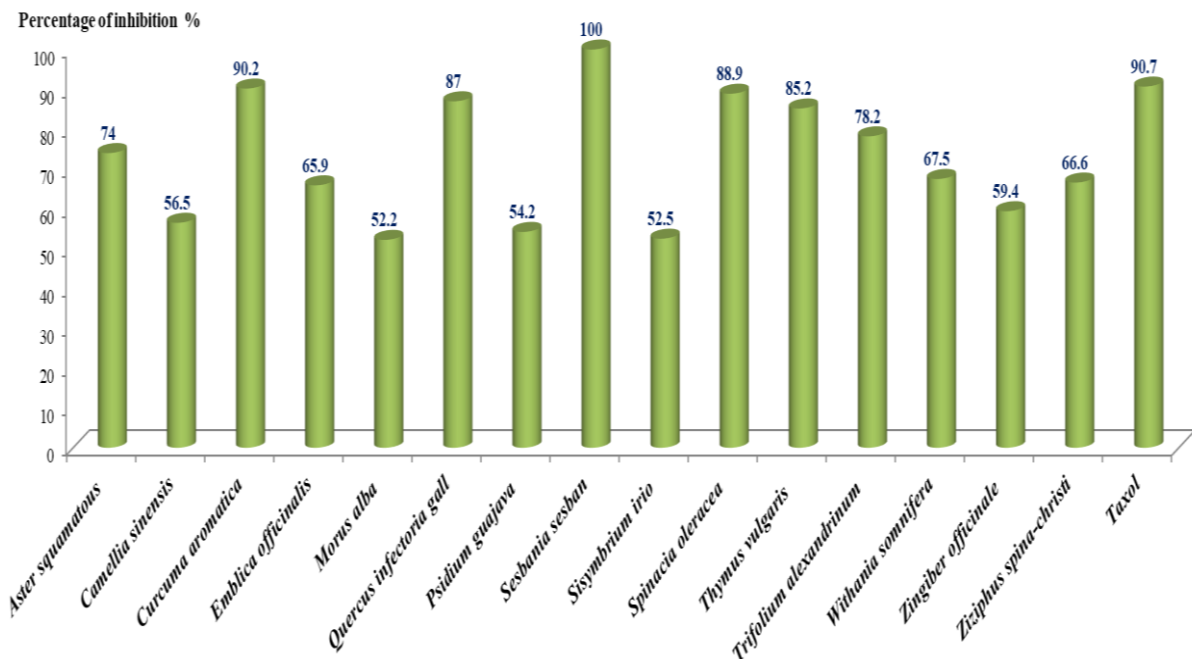


Figure 2: Percentage of inhibition of most active selected extracts against K562 cell line at a conc. of 10 mg/mL

Table 5: Percentage of inhibition (%) of 56 selected plant extracts against K562 cell line at a conc. of 10 mg/mL

No.	Plant name	Inhibition (%)	No.	Plant name	Inhibition (%)	No.	Plant name	Inhibition (%)
1	<i>Alhagi graecorum</i> Boiss	2.0	20	<i>Daucus carota</i> L.	42.1	39	<i>Psidium guajava</i> L.	54.2
2	<i>Amaranthus lividus</i> L.	14.5	21	<i>Desmostachia bipinnata</i> L. Stapf	39.9	40	<i>Punica granatum</i> L.	39.9
3	<i>Anastaticahier ochuntica</i> L.	0.0	22	<i>Emblica officinalis</i> L. Kurz	65.9	41	<i>Quercus infectoria</i> gall	87.0
4	<i>Artemisia Absinthium</i> L.	2.2	23	<i>Eruca sativa</i> Mill.	42.1	42	<i>Ricinus communis</i> L.	48.6
5	<i>Aster squamatus</i> Sprengel	74.0	24	<i>Ficus carica</i> L.	40.6	43	<i>Salix subserrata</i> Willd.	31.2
6	<i>Beta vulgaris</i> var. cicla L.	26.8	25	<i>Glycyrrhiza glabra</i> L.	42.0	44	<i>Sesamum indicum</i> L.	40.6
7	<i>Camellia sinensis</i> L. Kuntze	56.5	26	<i>Hibiscus sabdariffa</i> L.	40.6	45	<i>Sesbania sesban</i> L. Merr	100.0
8	<i>Cartagena ipecacuanha</i> Brot.	42.8	27	<i>Hyphaene thebaica</i> L. Mart.	45.7	46	<i>Sisymbrium irio</i> L.	52.5
9	<i>Chenopodium murale</i> L.	48.6	28	<i>Lawsonia inermis</i> L.	31.2	47	<i>Solenostemma argel</i> (Delile) Hayne	5.1
10	<i>Cichorium endivia</i> L.	42.1	29	<i>Lupinus termis</i> L.	40.6	48	<i>Spinacia oleracea</i> L.	88.9
11	<i>Cichorium intybus</i> L.	36.2	30	<i>Malva parviflora</i> L.	43.5	49	<i>Tamarindus indica</i> L.	40.7
12	<i>Cinnamomum cassia</i> (Nees & T.Nees) Farw.	42.8	31	<i>Mentha longifolia</i> L. Huds.	34.8	50	<i>Tamarix nilotica</i> L.	32.5
13	<i>Citrus reticulata</i> Blanco	40.6	32	<i>Morus alba</i> L.	52.2	51	<i>Thymus vulgaris</i> L.	85.2
14	<i>Conyza dioscoridis</i> L. Desf.	33.3	33	<i>Opuntia ficus indica</i> L. Mill.	33.3	52	<i>Tilia cordata</i> Mill.	43.7
15	<i>Corchorus olitorius</i> L.	36.2	34	<i>Origanum majorana</i> L.	34.8	53	<i>Trifolium alexandrinum</i> L.	78.2
16	<i>Curcuma aromatica</i> Salisb.	90.2	35	<i>Peganum harmal</i> L.	49.3	54	<i>Withania somnifera</i> L. Dunal.	67.5
17	<i>Cymbopogon Proximus</i> Spreng.	40.6	36	<i>Phaseolus vulgaris</i> L.	38.4	55	<i>Zingiber officinale</i> Roscoe	59.4
18	<i>Cyperus alopecuroides</i> Rottb.	33.3	37	<i>Phragmites communis</i> (Cav.) Trin. ex Steud.	31.1	56	<i>Ziziphus spina-christi</i> L. Desf.	66.6
19	<i>Cyperus Rotundus</i> L.	33.3	38	<i>Pimpinella anisum</i> L.	0.0	57	Taxol	90.7

Acknowledgements

This study was supported by the Egyptian Ministry of Higher Education Missions Sector (Grant No.: JS-3770). The authors are thankful to Dr. Guoyi Ma, University of Mississippi, for his help with biological testing against the K562 cell line.

References

- Alieldin N. NCI hospital based registry 2002–2010. [Online]. 2011. [cited 2014 Feb 23]. Available From: <http://www.nci.cu.edu.eg/>.
- Petry CF. The Cambridge History of Egypt. (Vol. 1). Cambridge University Press; 2008.
- Ibrahim AS, Khaled HM, Mikhail NN, Baraka H, Kamel H. Cancer incidence in Egypt: results of the national population-based cancer registry program. J Cancer Epidemiol. 2014; 2014(1):1-18.
- Hussein S, Mohamed D, Hafez R. Risk factors of hematological malignancies in Upper Egypt: a case-control study. Egypt J Intern Med. 2019; 31(2):171-177.
- Jabbour E and Kantarjian H. Chronic myeloid leukemia: 2018 update on diagnosis, therapy and monitoring. Am J Hematol. 2018; 93(3):442-459.
- Eskandari S and Yazdanparast R. signaling. Bcl6 gene-silencing facilitates PMA-induced megakaryocyte differentiation in K562 cells. J Cell Commun Signal. 2017; 11(4):357-367.
- Pavlovsky C, Chan O, Talati C, Pinilla-Ibarz J. Ponatinib in the treatment of chronic myeloid leukemia and Philadelphia chromosome positive acute lymphoblastic leukemia. Future Oncol. 2019; 15(3):257-269.
- Shibata N, Ohoka N, Tsuji G, Demizu Y, Miyawaza K, Ui-Tei K, Naito M. Deubiquitylase USP25 prevents degradation of BCR-ABL protein and ensures proliferation of Ph-positive leukemia cells. Oncogene. 2020; 39(19):3867-3878.
- Khaled SA and Abd El Aziz NM. Demographic, clinical, and hematologic characteristics of patients with chronic myeloid leukemia in Upper Egypt: association with treatment responses. Egypt J Haematol. 2015; 40(4):195.
- Tadesse F, Asres G, Abubeker A, Gebremedhin A, Radich J. Spectrum of BCR-ABL Mutations and Treatment Outcomes in Ethiopian Imatinib-Resistant Patients With Chronic Myeloid Leukemia. JCO Glob Oncol. 2021; 7(1):1187-1193.
- Schrock AB, Zhu VW, Hsieh WS, Madison R, Creelan B, Silberberg J, Ou SHI. Receptor tyrosine kinase fusions and BRAF kinase fusions are rare but actionable resistance mechanisms to EGFR tyrosine kinase inhibitors. J Thorac Oncol. 2018; 13(9):1312-1323.
- Ali MA. Chronic myeloid leukemia in the era of tyrosine kinase inhibitors: an evolving paradigm of molecularly targeted therapy. Mol Diagn Ther. 2016; 20(4):315-333.
- Mahon F-X, Belloc F, Lagarde V, Chollet C, Moreau-Gaudry F, Reiffers J, Melo JV. MDR1 gene overexpression confers resistance to imatinib mesylate in leukemia cell line models. Blood, Am J Hematol. 2003; 101(6):2368-2373.
- Elghannam DM, Ibrahim L, Ebrahim MA, Azmy E, Hakem H. Association of MDR1 gene polymorphism (G2677T) with imatinib response in Egyptian chronic myeloid leukemia patients. Hematol. 2014; 19(3):123-128.
- El-Menoufy MA, El Naggat AA, Ziada LE. 'Gatekeeper' mutation in patients with chronic myeloid leukemia resistant to imatinib therapy: effect on survival. Egypt J Haematol. 2018; 43(3):138.
- Khalil NA, Desouky MN, Diab IH, Hamed NA, Mannaa HF. MicroRNA 30a Mediated Autophagy and Imatinib Response in Egyptian Chronic Myeloid Leukemia Patients. Indian J Hematol Blood Transfus. 2019; 36(3):491-497.
- Khajapeer KV and Baskaran R. Natural products for treatment of chronic myeloid leukemia. Anti-cancer drugsnature, synthesis and cell.(1st ed). Intech publications, Croatia. 2016; 1-48p.
- Kandal HA, Swart JA, Yacoub HA, Gerkema MP. The role of traditional knowledge policies in Egypt: the case of Wadi Allaqi. Environ Dev Sustain. 2021; 23(8):11751-11765.
- Thomford NE, Senthebane DA, Rowe A, Munro D, Seele P, Maroyi A, Dzobo K. Natural products for drug discovery in the 21st century: innovations for novel drug discovery. Int J Mol Sci. 2018;19(6):1578.
- Lage OM, Ramos MC, Calisto R, Almeida E, Vasconcelos V, Vicente F. Current screening methodologies in drug discovery for selected human diseases. Mar Drugs. 2018; 16(8):279.
- Valletta E, Rinaldi A, Marini M, Franzese O, Roscetti G. Distinct *Hypericum perforatum* L. total extracts exert different antitumour activity on erythroleukemic K562 cells. Phytother Res. 2018; 32(9):1803-1811.
- Yang C, Cai H, Meng X. Polyphyllin D induces apoptosis and differentiation in K562 human leukemia cells. Int Immunopharmacol. 2016; 36(1):17-22.
- Liu Y, Ren Z, Li X, Zhong J, Bi Y, Li R, Yu X. Pristimerin Induces Autophagy-Mediated Cell Death in K562 Cells through the ROS/JNK Signaling Pathway. Chem Biodivers. 2019; 16(8):e1900325.
- Tatiya AU, Dande PR, Mutha RE, Surana SJ. Effect of saponins from of *Sesbania sesban* l.(merr) on acute and chronic inflammation in experimental induced animals. J Biol Sci.2013; 13(3):123.
- Soren AD, Chen RP, Yadav AK. *In vitro* and *in vivo* anthelmintic study of *Sesbania sesban* var. bicolor, a traditionally used medicinal plant of Santhal tribe in Assam, India J Parasit Dis. 2021; 45(1):1-9.
- Tatiya AU, Dande PR, Mutha RE, Surana S. Effect of Saponins of *Sesbania sesban* L.(Merr) On Acute And Chronic Inflammation in Experimental Induced Animals. J Biol Sci. 2013; 13(3):123-130.
- Das N, Chandran P, Chakraborty S. Potent spermicidal effect of oleanolic acid 3-beta-D-glucuronide, an active principle isolated from the plant *Sesbania sesban* Merrill. J Contracept. 2011; 83(2):167-175.
- Mahamat OB, Younes S, Otchom BB, Franzel S, Mahamat ADO, Fadoua A. Ecology, Morphology, Distribution, and Use of *Sesbania tchadica* (*Sesbania Sesban*) from the Republic of Chad: A Review. [Online]. 2021. Available from: <https://www.researchsquare.com/article/rs-543115/v1>.
- Dorsaz AC, Hostettmann M, Hostettmann K. Molluscicidal saponins from *Sesbania sesban*. Planta Med. 1988; 54(03):225-227.
- Haraguchi M, Mimaki Y, Braggio MM, Santiago WO, Yokosuka A, Sashida Y. Triterpene Saponins from the Leaves of *Sesbania sesban* (Natural Medicine Note). J Nat Med. 2000; 54(6):350.
- Dianhar H, Syah YM, Mujahidin D, Hakim EH, Juliawaty LD. A flavone derivative from *Sesbania sesban* leaves and its cytotoxicity against murine leukemia P-388 cells. Paper presented at: AIP Conference Proceedings, 2014.
- Saxena V and Mishra L. A novel lupinisoflavone glycoside from stems of *Sesbania aegyptiaca* Poir. Journal of the Institution of Chemists (India).1999; 71(5):191-192.
- Khattab AM and Nassar MI. Phytochemical and molluscicidal studies on *Peltophorum africanum* and *Sesbania sesban*. Bull Natl Res Cent (Egypt). 1998; 23(4):401-407.
- Zamrus SNH, Akhtar MN, Yeap SK, Quah CK, Loh WS, Alitheen NB, Shah SAA. Design, synthesis and cytotoxic effects of curcuminoids on HeLa, K562, MCF-7 and MDA-MB-231 cancer cell lines. Chem Cent J. 2018; 12(1):1-10.

35. Kobori M, Nishiba Y, Shinohara K. Effect of Spinach Extracts on the Proliferation and on Some Phenotypic Characteristics of Human Myeloid Leukemia Cell Lines. *Animal Cell Technology: Basic & Applied Aspects*: Springer; 1993; 189-193p.
36. Mohanraj M. An Innovative Assimilation on Pharmacognostical, Phytochemical and Contending against *Malassezia Furfur* of *Spinacia Oleracea* L. Leaves and Its Bioactive Component (Doctoral dissertation, College of Pharmacy, Madurai Medical College, Madurai) 2018.
37. Yuk H J, Ryu HW, Kim DY, Park MH, Seo WD, Jeong SH, Oh SR. Comparison of flavonoid and policosanols profiles in Korean winter-spinach (*Spinacia oleracea* L.) cultivated in different regions. *Food Chem.* 2019; 279(1):202-208.
38. Ferreres F, Castañer M, Tomás-Barberán FA. Acylated flavonol glycosides from spinach leaves (*Spinacia oleracea*). *Phytochem.* 1997; 45(8):1701-1705.
39. Hasan HF. Evaluation of the effect of flavonoids isolated from *Spinacia oleracea* leaves on pituitary-adrenal ovarian axis in mice treated with doxorubicin. *J Adv Pharm Educ.* 2019; 9(3):91-95.
40. Aritomi M, Komori T, Kawasaki T. Flavonol glycosides in leaves of *Spinacia oleracea*. *Phytochem.* 1985; 25(1):231-234.
41. Edenharter R, Keller G, Platt KL, Unger KK. Isolation and characterization of structurally novel antimutagenic flavonoids from spinach (*Spinacia oleracea*). *J Agric Food Chem.* 2001; 49(6):2767-2773.
42. Chen YS and Feng YQ. Rapid Determination of Endogenous 20-Hydroxyecdysone in Plants on MALDI-TOF/TOF Mass Spectrometry via Chemical Labeling Based on Boronate Affinity. *J Anal Test.* 2021; 4(3):175-182.
43. Dawidar A and Amer M. Sterol content of *Spinacia oleracea*. *Phytochem.* 1973; 12(5):1181-1182.
44. Mithöfer A, Jakupovic J, Weiler E. A triterpenoid glycoside from *Spinacia oleracea*. *Nat Prod Lett.* 1999; 14(1):5-10.
45. Bunea A, Andjelkovic M, Socaciu C, Bobis O, Neacsu M, Verhé R, Van Camp J. Total and individual carotenoids and phenolic acids content in fresh, refrigerated and processed spinach (*Spinacia oleracea* L.). *Food Chem.* 2008; 108(2):649-656.
46. Kamiloglu S. Industrial freezing effects on the content and bioaccessibility of spinach (*Spinacia oleracea* L.) polyphenols. *J Sci Food Agric.* 2020; 100(11):4190-4198.
47. De Valle-Prieto MB, Delgado-Adámez J, Gil MV, Martillanes S, Franco MN, Martín-Vertedor D. Virgin olive oil enriched with lutein-zeaxanthin from *Spinacia oleracea*. *J Oleo Sci.* 2017; 66(5):463-468.
48. Wang R, Furumoto T, Motoyama K, OKAZAKI K, KONDO A, FUKUI H. Possible antitumor promoters in *Spinacia oleracea* (spinach) and comparison of their contents among cultivars. *Biosci Biotechnol Biochem.* 2002; 66(2):248-254.
49. Roberts JL and Moreau R. Functional properties of spinach (*Spinacia oleracea* L.) phytochemicals and bioactives. *Food Funct.* 2016; 7(8):3337-3353.
50. Mahnaz M, Leila A, Majid T. Antioxidant and cytotoxic activities of ethanol extract of *Quercus Infectoria* galls. 21st International Iranian Congress of Physiology and Pharmacology. Tabriz University of Medical Sciences; 2013; 21(1):1-2.
51. Reddy TC, Reddy DB, Aparna A, Arunasree KM, Gupta G, Achari C, Reddy GV, Lakshmi pathi V, Subramanyam A, Reddanna P. Anti-leukemic effects of gallic acid on human leukemia K562 cells: Downregulation of COX-2, inhibition of BCR/ABL kinase and NF-κB inactivation. *Toxicol In Vitro.* 2012; 26(3):396-405.
52. Amirghofran Z and Karimi MH. Cytotoxic activity of *Thymus vulgaris*, *Achillea millefolium* and *Thuja orientalis* on different growing cell lines. *Med J Islam Repub Iran.* 2001; 15(3):149-154.
53. Lampronti I, Saab AM, Gambari R. Antiproliferative activity of essential oils derived from plants belonging to the Magnoliophyta division. *Int J Oncol.* 2006; 29(4):989-995.
54. Horvathova E, Turcaniova V, Slamenova D. Comparative study of DNA-damaging and DNA-protective effects of selected components of essential plant oils in human leukemic cells K562. *Neoplasma.* 2007; 54(6):478.